

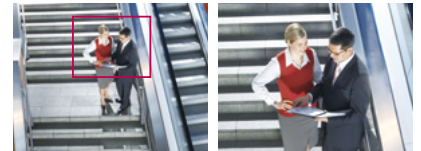
LG ipsolute CAPTURE EVERY MOMENT WITH FULL HD RESOLUTION

Full HD x20 IP PTZ Dome Camera.



x20 OPTICAL ZOOM(4.7 ~ 94mm)

Close monitoring is possible through the powerful x20 optical zoom.



PANNING AND TILTING

The PTZ camera, it quickly and thoroughly monitors the preset areas by using high-speed panning and tilting functions.

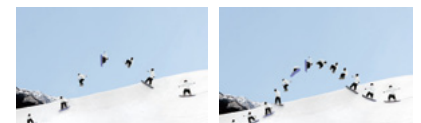


Max. 360°/sec HIGH SPEED PANNING & TILTING



REAL-TIME STREAMING @ 1,080P

LG IP products can transmit Full HD high resolution images at up to 30fps in real time. This allows users to monitor seamless Full HD security images.



Non Real-Time Streaming

Real-Time Streaming



VANDAL PROOF / IP66

A strong and durable cover protects the camera from external harms, especially from impacts due to any drastic change in temperature or humidity.



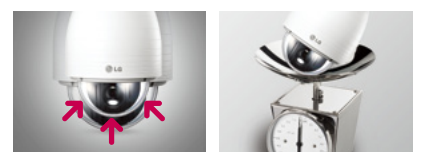
Vandal Proof

IP66



ULTRA COMPACT / ULTRA LIGHT

Apparatus that is 20% smaller than before it can be easily installed due to the size and weight.



Ultra Compact

Ultra Light



LW9424

1,080p x20 IP PTZ Dome Camera

SPECIFICATIONS

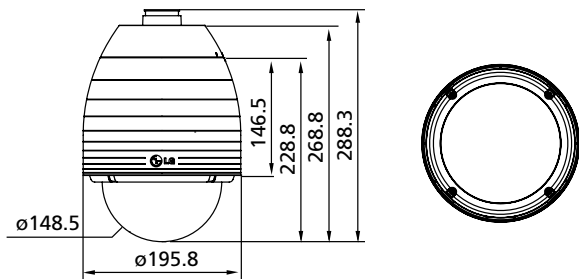
Model	LW9424	
General	Type	1,080p x20 IP PTZ Dome Camera
Camera	Image Sensor	1/3 Type Solid State Progressive Scan CMOS
	Lens	x20 Zoom (F1.6(Wide End) , F3.5(Tele End) (f = 4.7mm ~ 94.0 mm)
	Resolution	Up to 1,920 x 1,080
	Min. Illumination	Color : 0.5 Lux @ Sens-up Auto, B/W : 0.0005 Lux @ Snes-up Auto
	ICR Day / Night WDR	○ ○
PTZ	Image Enhancement	Backlight compensation / Exposure Control / DSS / AGC / White Balance / Privacy masking / Sharpness / D-Zoom / E-FLIP / Mirror / Freeze
	Optical Zoom	x20
	Panning Range & Speed	0°~360°, Max. 360°/Sec
	Tilting Range & Speed	0°~90°(Mecha-flip), Max. 360°/Sec
	Auto Panning	2 - 8 Points
Video/Audio	Preset/ID Group Touring	128 Max. 8 Groups
	Pattern Auto Tracking	4EA -
	Video Compression Frame Rate	H.264 / MJPEG 30 fps @ 1080p
Event	Multi-Streaming Open Protocol	Dual Streaming ONVIF 1.02, PSIA 1.1
	Audio Compression 2-Way Audio	G.711 ○
	Motion Detection Event Notification	○ Relay Out / Email / FTP
Interface	Pre Event Buffering	○
	Video In/Out	1 BNC Out
	Audio In/Out Alarm In/Out	1/1 2/2
Network	RS-485 SD Slot	○ ○
	Ethernet	RJ-45 10/100 BASE-T
	Security IP Protocol	Password Protection, HTTPS(SSL, TLS) IPv4, IPv6
	Web Viewer	IPv4 : TCP/IP, HTTP, HTTPS, RTP, RTSP, UDP, DHCP, FTP, SMTP, NTP, ARP, ICMP, DDNS(LG) IPv6 : TCP/IP, HTTP, HTTPS, RTP, RTSP, UDP, DHCP, ICMP
	Video Management Software (VMS) Connections	Supported OS : Windows XP Professional, Windows VISTA, Windows 7 Supported Browser : Microsoft Internet Explorer above the version 6.0 and below the version 8.0. LG Smart Station, LG Ipsolute VMS Suite, Mobile Application (iPhone, Android)
Power	Power Source	Up to 10
	Power Consumption	DC12V / AC24V DC12V : 24W / AC24V : 50W
Environmental	Operating Temperature / Humidity	-20°C ~ 50°C, -40°C(w/ 2nd heater) ~ 50°C / 0% ~ 80%RH
	Standard Approvals	FCC Part 15, Subpart B, Class A, CE, ROHS, KCC
Mechanical	Color / Material	White / Aluminum
	Ingress Protection	Vandal Proof / IP66
	Dimension (Ø x H)	Body(195.8 x 228.8 mm / 7.7 x 9.0")
	Weight	Body/about : 2.9kg

FEATURES

- 1/3 Type Solid State Progressive Scan CMOS
- 1,920 x 1,080 Resolution
- x20 Optical Zoom and x12 Digital Zoom
- 30 fps @ 1,920 x 1,080 Resolution
- Min. Illumination
Color : 0.5 Lux @ Sens-up Auto,
B/W : 0.0005 Lux @ Snes-up Auto
- H.264 / MJPEG Dual Codec
- Dual Streaming Enabled
- Panning Range & Speed : 0°~360°, Max. 360°/Sec
- Tilting Range & Speed : 0°~90°(Mecha-flip), Max. 360°/Sec
- Wide Dynamic Range
- ICR Day & Night
- Vandal Proof / IP66
- LG Ipsolute VMS Suite
Mobile Application (iPhone, Android)
- DC 12V / AC 24V



DIMENSION (Unit : mm)



BRACKETS



LG Twin Towers, 20 Yeouido-dong, Yeongdeungpo-gu, Seoul 150-721, Korea
Phone : +82-2-3777-5184 Fax : +82-2-3777-5185

The eco-friendly label is attached to those products which have passed LG Electronics' rigorous environmental criteria that evaluate 6 hazardous materials (lead, mercury, cadmium, etc.)

