

IP Fixed Network Camera LSW900P/N



• Extra Lens

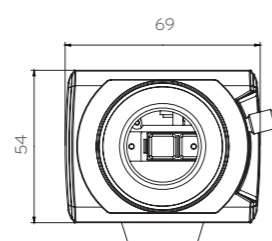
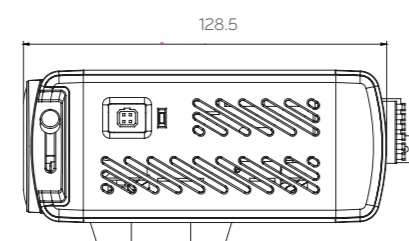


Features

- 540 TV Lines
- 1/3" Vertical Double Interline CCD
- Min. Illumination : 0.1 Lux (Color mode, Sens up off) 0.00003lux (B/W Mode, Sens up on)
- Compression : H.264, MJPEG(Dual Stream Support)
- Resolution (Max) : 704x480(NTSC), 704x576(PAL)
- Frame Rate (Max) : 30 fps/25fps(NTSC/PAL) @ D1
- ICR True D&N
- Wide Dynamic Range
- 1port Video Output
- Two-way Audio
- Alarm In/Out
- Protocol : TCP/IP, HTTP, HTTPS, RTP, RTSP, UDP, DHCP, FTP, SMTP, NTP, ARP, ICMP, DDNS(LG)
- Client/Server Management S/W (Max 64ch Live/NAS Recoding support)
- VCA(Video Contents Analysis) support
- 8 Privacy Masking
- AC24V, DC12V, PoE
- RS-485 Support

Dimensions (unit : mm)

• W : 69mm • H : 54mm • D : 128.5mm



Can I select only the screens I want without looking at all the others?

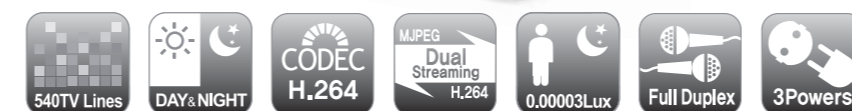
Checking screens with no problem is just a waste of time, efforts and costs. The intelligent monitoring system that detects screens with problems and enables prompt responses minimizes risks by quickly handing with sudden accidents.

Specifications

Model	LSW900P/N
Type	IP Indoor Box Camera
Image sensor	1/3" Vertical Double interline CCD
Lens	C/CS Mount
Day & Night	ICR Day & Night
Min illumination	Color : 0.1Lux(sens-up off) B/W : 0.00003Lux(sens-up on)
Compression	Dual Stream Support(H.264, MJPEG)
Resolution(Max)	704 x 480(NTSC), 704 x 576(PAL)
Backlight Compensation	BLC / WDR / HSBLC / OFF
Frame per second	30 fps/25fps(NTSC/PAL) @ D1
Audio	Full Duplex(G.726, G.711)
Alarm In/Out	1 Digital input / 1 Relay output
Video In/Out	1port video output(BNC)
Intelligent video	Advanced Motion Detection(VCA*)
Event Notification	Relay, SMTP, FTP
Ethernet Networks	1port 10/100Base-Tx
Network Protocol	TCP/IP, HTTP,HTTPS, RTP, RTSP,UDP,DHCP, FTP, SMTP, NTP, ARP, ICMP, DDNS(LG)
Management	Web GUI, Management Software(Max 64ch)
Security	Multi level user ID/password HTTPS encryption
Power	AC24V, DC12V, PoE
Serial Connectors	RS-485
Operating Temp.	-10°C ~ 50°C
Dimensions	69(W) x 54(H) x 128.5(D)

* Crossing line, Intruder Detector, Object Counting, Tampering, Object Removal (Model with VCA : LSW901P/N)

IP Dome Network Camera LVW900P/N LVW700P/N



LVW900P/N

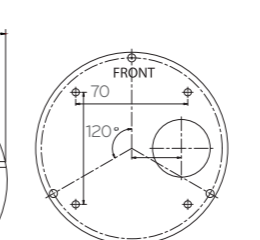
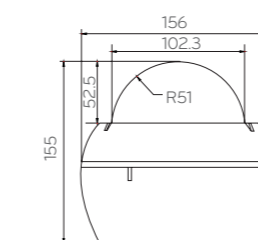
LVW700P/N

Features

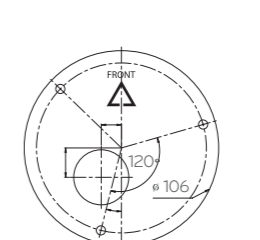
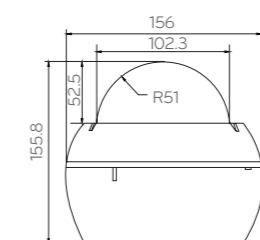
- 540 TV Lines
- 1/3" Vertical Double Interline CCD
- Varifocal Lens (2.8~11mm)
- Min. Illumination : 0.1 Lux (Color mode, Sens up off) 0.00003lux (B/W Mode, Sens up on)
- Compression : H.264, MJPEG(Dual Stream Support)
- Resolution (Max) : 704x480(NTSC), 704x576(PAL)
- Frame Rate (Max) : 30 fps/25fps(NTSC/PAL) @ D1
- ICR True D&N
- Wide Dynamic Range
- 1port Video Output
- Two-way Audio
- Alarm In/Out
- Protocol : TCP/IP, HTTP, HTTPS, RTP, RTSP, UDP, DHCP, FTP, SMTP, NTP, ARP, ICMP, DDNS(LG)
- Client/Server Management S/W (Max 64ch Live/NAS Recoding support)
- VCA (Video Contents Analysis) support
- 8 Privacy Masking
- AC24V, DC12V, PoE
- Vandal Proof, IP66, 3-Axis (LVW900P/N)
- 3-Axis (LVW700P/N)

Dimensions (unit : mm)

LVW900P/N • Diameter:156mm • H:155mm
LVW700P/N • Diameter:156mm • H:155.8mm

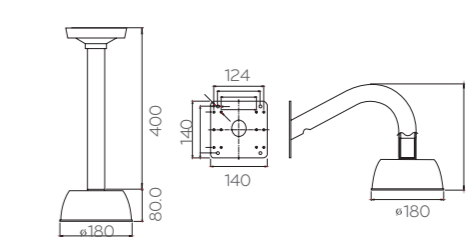


• LVW900P/N



• LVW700P/N

Brackets



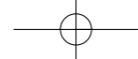
• LSO-300P

• LSO-300W



What kind of equipment would we need to show the parents of kindergartners what their children are up to at school?

If you have an IP camera installed, it's really quite simple. If you simply connect to the Internet and open the web client screen, without any other additional equipment, anyone can monitor the children in real time.



Specifications



Model	LSW900	LVW900 / LVW700
Image Sensor	1/3" Vertical Double Interline CCD	1/3" Vertical Double Interline CCD
Type	C/CS Mount	Varifocal Lens(2.8-11mm)
Video Out	1.0Vp-p Composite Signal (75ohm)	1.0Vp-p Composite Signal (75ohm)
Auto Gain Control	OFF / LOW / MIDDLE / HIGH	OFF / LOW / MIDDLE / HIGH
Exposure	ALC/ELC	ALC/ELC
Electric Shutter	1/50 - 1/90,000(PAL), 1/60-1/90,000(NTSC)	1/50 - 1/90,000(PAL), 1/60-1/90,000(NTSC)
Day/Night	ICR Day and Night (Auto / Day / Night)	ICR Day/Night (Vari focal Lens)(Auto / Day / Night)
Sens-Up	Auto / OFF	Auto / OFF
Min. Illumination	0.1 Lux (Color mode, Sens up off) 0.00003lux (B/W Mode, Senseup on)	0.1 Lux (Color mode, Sens up off) 0.00003lux (B/W Mode, Senseup on)
Resolution	540 TV Lines	540 TV Lines
White Balance	ATW / AWC / Manual	ATW / AWC / Manual
Backlight Compensation	BLC / WDR / HSBLC / OFF	BLC / WDR / HSBLC / OFF
3D-DNR	OFF / Low / Middle / High	OFF / Low / Middle / High
Privacy Masking	8 Zone	8 Zone
Digital Zoom	X8	X8
DIS(Stabilizer)	ON / OFF	ON / OFF
Digital Effect	OFF / V-Flip / Mirror / Rotate	OFF / V-Flip / Mirror / Rotate
Sharpness	Adjustable	Adjustable
Resolution(Max)	704 x 480(NTSC), 704 x 576(PAL)	704 x 480(NTSC), 704 x 576(PAL)
Output	RJ-45(Network), CVBS(Monitor)	RJ-45(Network), CVBS(Monitor)
Frame Rate(Max)	30 fps/25fps(NTSC/PAL) @ D1	30 fps/25fps(NTSC/PAL) @ D1
Video Compression	H.264(Basic Profile) MJPEG Dual Stream Support	H.264(Basic Profile) MJPEG Dual Stream Support
Streaming	Dual compressed stream Independent selection of Audio/Video Codec RTP/RTSP (Independent resolution, compression frame rate and bit rate (CBR/VBR) setting support)	Dual compressed stream Independent selection of Audio/Video Codec RTP/RTSP (Independent resolution, compression frame rate and bit rate (CBR/VBR) setting support)
Direction	Full Duplex(Line level input/output) - Audio Input 1Ch, Audio Output 1Ch	Full Duplex(Line level input/output) - Audio Input 1Ch, Audio Output 1Ch
Audio Compression	G.726, G.711(A-law, u-law)	G.726, G.711(A-law, u-law)
Alarm In/Out	1 digital inputs, 1 relay outputs	1 digital inputs, 1 relay outputs
Pre/Post Alarm Buffer	Pre Alarm Buffer Post Alarm Buffer	Pre Alarm Buffer Post Alarm Buffer
Intelligent Video	Advanced Motion Detection(VCA)	Advanced Motion Detection(VCA)
Event Detection	Alarm In, VCA	Alarm In, VCA
Event Notification	Relay, SMTP, FTP	Relay, SMTP, FTP
ID/Password	Multi level user ID/password(Admin, Power,Normal, Customer)	Multi level user ID/password(Admin, Power,Normal, Customer)
Encryption	HTTPS(SSL, TLS)	HTTPS(SSL, TLS)
Physical Layer	10/100base TX Ethernet	10/100base TX Ethernet

Model	LSW900	LVW900 / LVW700
Protocol	TCP/IP, HTTP, HTTPS, RTP,RTSP,UDP,DHCP,FTP,SMTP,NTP,ARP,ICMP,DDNS(LG)	TCP/IP, HTTP, HTTPS, RTP,RTSP,UDP,DHCP,FTP,SMTP,NTP,ARP,ICMP,DDNS(LG)
IP support	Dynamic, Static, Private IP	Dynamic, Static, Private IP
Simultaneous Connection	Unicast 10 Streams / 50 user registration	Unicast 10 Streams / 50 user registration
Operating Condition	-10°C ~ 50°C	-30°C ~ 50°C(Heater)(LVW900) -10°C ~ 50°C(LVW700)
Power	AC24V, DC12V, PoE	AC24V, DC12V, PoE
Dimensions	69(W) x 54(H) x 128.5(D)	156(Diameter) x 155(H)(LVW900) 156(Diameter) x 155.8(H)(LVW700)
Other	RS-485 Support	Vandal Proof, IP66, 3-Axis(LVW900) 3-Axis(LVW700)



Model	LVS301	
Resolution(Max)	704 x 480(NTSC), 704 x 576(PAL)	Intelligent Video
Input	1Ch Video Input(CVBS)	Event Detection
Output	RJ-45(Network), CVBS(Monitor)	Event Notification
Frame Rate(Max)	30 fps/25fps(NTSC/PAL) @ D1	ID/Password
Video Compression	Dual Stream Support(H.264 MJPEG)	Encryption
Streaming	Dual compressed stream Independent selection of Audio/Video Codec RTP/RTSP (Independent resolution, compression frame rate and bit rate (CBR/VBR) setting support)	Physical Layer
Direction	Full Duplex(Line level input/output) - Audio Input 1Ch, Audio Output 1Ch	Protocol
Audio Compression	G.726, G.711(A-law, u-law)	IP support
Alarm In/Out	1 digital input, 1 relay output	Simultaneous Connection
Pre/Post Alarm Buffer	Pre Alarm Buffer Post Alarm Buffer	Operating Condition
		Power
		Dimensions
		Other

