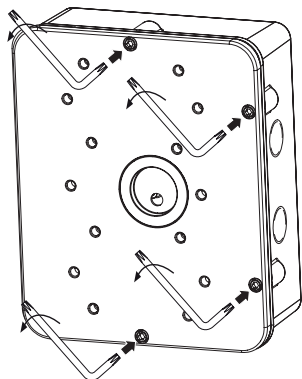
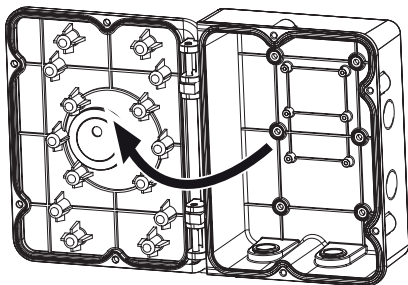


## Ceiling mounting before connecting the Bracket

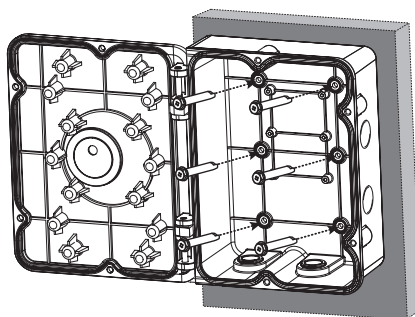
- 1 Dissassemble the Door from the Junction Box Bracket by using the supplied wrench.



- 2 Open the Junction Box Bracket Door.



- 3 Assemble the Junction Box Bracket to the ceiling or wall and tighten six screws.



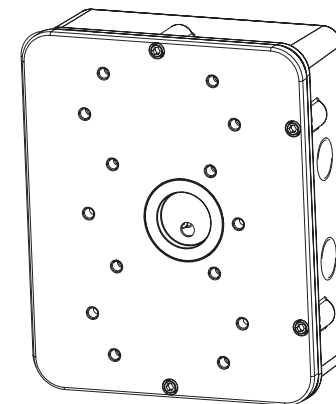
## Installation Guide

### Junction Box Bracket

Model: LPS100V

#### Accessories

- Installation manual
- Screw accessory
  - Wrench(M4) (1 ea), (M5) (1 ea)
  - Plastic Anchor (6 ea)
  - Screw Machine(M6 x L14.0 mm) (6 ea)  
(M5 x L25.0 mm) (6 ea), (M6 x L26.0 mm) (4 ea), (M4 x L12.0 mm) (4 ea),  
(M3 x L12.0 mm) (4 ea)
  - Rubber (6 ea)



## Getting Started

### Introduction

This product is designed for installation of the Wall Mount Bracket (LBK1000W), Pendant Mount Bracket (LBK1000P) or Parapet Mount Bracket (LBK1100R) on the ceiling or wall.

### The installable LG Bracket

- LBK1000W, LBK1000P and LBK1100R models
- Refer to the owner's manual of LG Bracket for the compatibility of this product.
- Actual set may be differ from the picture described in this manual.

### Installation Precautions

Make sure that the installation place can endure at least 4 times of the total weight of the Junction Box Bracket, Camera, and Wall/Pendant/Parapet Mount Bracket.

### Specifications

- Dimensions (W x H): 205.8 mm x 251.6 mm
- Net Weight: 2.2 kg
- Material: Aluminum
- Operating Temperature: -50 °C to 60 °C
- Operating Humidity: 0 to 100 %

### WARNING:

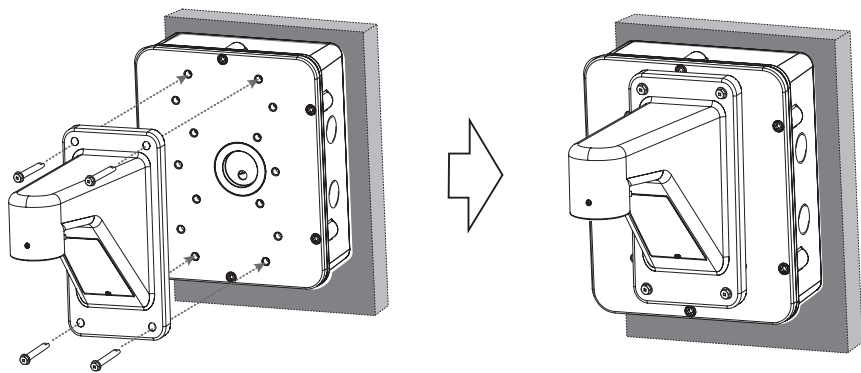
This product contains chemicals known to the State of California to cause cancer and birth defects or reproductive harm. **Wash hands after handling.**



MFL67644625

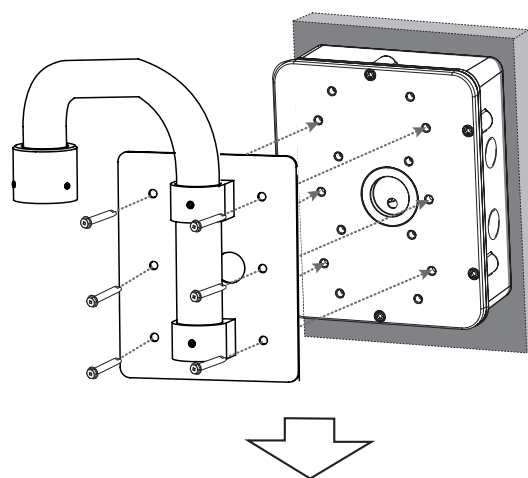
## Installation with LBK1000W model

Install the Wall Mount Bracket to the Junction Box Bracket.

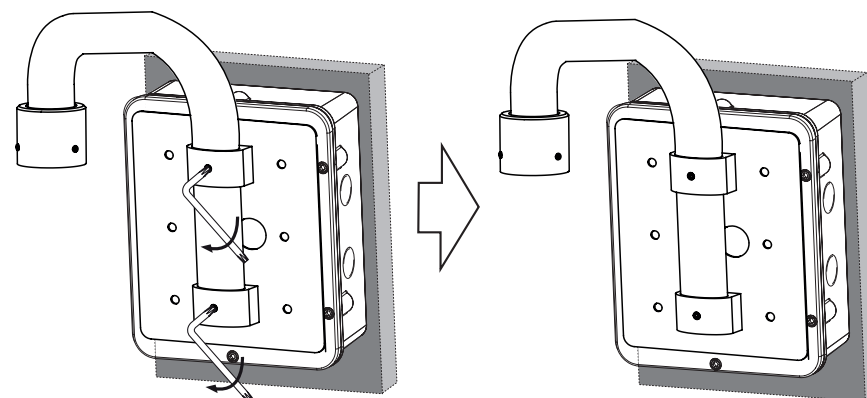


## Installation with LBK1100R model

Install the Wall Mount Bracket to the Junction Box Bracket.



Use the supplied wrench to tighten the screws.



## Installation with LBK1000P model

Install the Pendant Mount Bracket to the Junction Box Bracket.

