

High Density VGA USB KVM Matrix Switch

UNIMUX™

Up to four users can control 32 USB computers

- The High Density Switch saves rack space.
 - The 2x8, 2x16 and 4x8 switches are 1RU in height.
 - The 2x32, 4x16 and 4x32 switches are 2RU in height.
- Features NTI's patented true autoboot USB switching – all attached computers can be booted simultaneously.
- Compatible with USB computers (PC, SUN, MAC).
- Cascade UNIMUX switches off a single master switch to control up to 256 computers as if from one switch.
- High quality steel construction.
- Crisp and clear 1920x1200 video resolution.
- Equipped with OSD, Liquid Crystal Display, RS232, and Ethernet.
- Dedicated microprocessors prevent computers from locking up, ensuring reliable control.
- Cabling runs are simplified with NTI's high density KVM switch cables.
- Flash upgradeable
- Optional support for USB 2.0 (low/full speed) devices, in addition to keyboards and mice, such as a 3M or Elo USB touch screen monitors, SMART Board™ Interactive Whiteboards, or CAC card readers.
 - Additional USB device must be the same for each user.
- Optional extender ports for locating remote users up to 300 feet via CAT5/5e/6 cable.
 - 2-port models feature one local user and one remote user ports.
 - 4-port models feature two local user and two remote user ports.
 - For switches with the additional USB port option, the remote user does not have access to the extra USB device.
- Optional stereo audio support using an Audio Matrix Add-On Switch (not included).
 - Supported High Density USB KVM Matrix Switches
 - (UNIMUX-nXm-UHDA/UHDUA/UHDC5A/UHDUC5A) feature a male DB9 connector for connecting the Audio Matrix Add-On Switch.

Available options:

- **USB connector for 3M or Elo USB touch screen monitor, CAC reader, or SMARTBoard™ Interactive Whiteboard**
- **Extender ports for connecting up to two remote users 300 feet away via CAT5**
- **Audio Matrix port for switching audio with Audio Matrix Add-On Switch**



UNIMUX-4X8-UHDUC5 (Front and Back)

The UNIMUX™ High Density VGA USB KVM Matrix Switch allows up to four users to individually command or simultaneously share up to 32 USB computers. Access USB computers (PC, SUN, and MAC) using USB keyboards and mice, and VGA multiscan monitors.

Specifications

Hosts

- Female 15-pin HD connectors.
- Supports USB computers with VGA video.
- Multiplatform support: Windows 2000/XP/Vista/7, Windows Server 2000/2003/2008, Solaris, Linux, FreeBSD, and MAC OS 9/10.
- Any legacy PS/2 or SUN computer can be connected by using a USB-PS2-R or USB-SUN-R adapter.

Devices

- Female USB Type A connectors.
- Keyboard and mouse are hot-pluggable.
- Available with optional female USB Type A connectors for additional USB 2.0 (low/full speed) devices - USB touch screen monitors, CAC card readers, interactive whiteboards, or barcode scanners.
 - USB maximum data rate: 12 Mbps.
 - Supported touch screen monitors: Microtouch 3M, ELO 1529L 3000 Series, Smart Podium ID422w, Hope Industrial HIS-RL17, NEC MultiSync E222W, Industrial Electronic Devices Inc IWS-240t-G3, Zytronics CML-170, Pulse IR TSV4001/DT40 and HP Compaq.
 - Supported interactive whiteboards: SMART Board™ SB640
 - Supported card readers: Athena, Cherry, Gemalto, Generic USB, Dell smart card/keyboard combo, and SCM Microsystems.

Monitor

- Crisp and clear 1920x1200 resolution.
- Female 15-pin HD connectors.
- A multiscan VGA monitor is required to display the different video outputs from different platforms.
- Bandwidth is 150 MHz.

Regulatory Approvals

- CE, RoHS

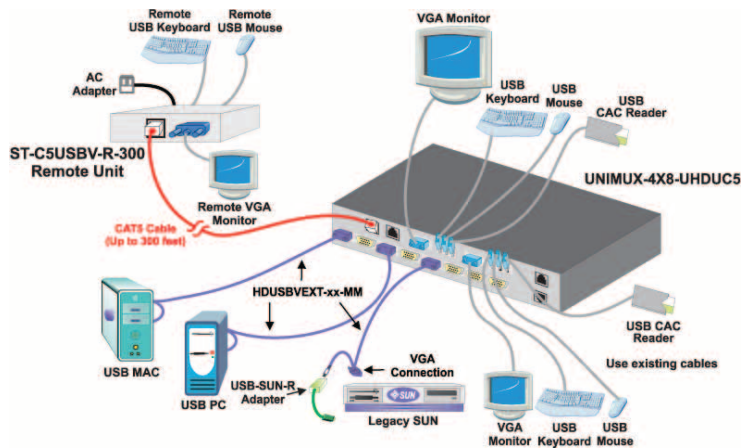
Power

- 110 or 220 VAC at 50 or 60 Hz via IEC connector.

Power Consumption			
Model	Watts	Model	Watts
2x8	15	4x8	20
2x16	15	4x16	25
2x32	20	4x32	40

Up to four users can control 32 USB computers

Configuration and Cable Illustration



Options

Audio Matrix Add-On Switch

- Controlled through USB KVM Matrix Switch operations.
- 3.5mm female stereo audio jacks for inputs and outputs.
- One female DB9 connector for connecting to the compatible High Density USB KVM Matrix Switch (UNIMUX-nXm-UHDA/UHDUA/UHDC5A/UHDUC5A).
- Supported High Density USB KVM Matrix Switches feature a male DB9 connector for connecting the Audio Matrix Add-On Switch.
 - UNIMUX-SA-8X8 compatible with all 2x8 and 4x8 High Density USB KVM Matrix Switch models
 - UNIMUX-SA-16X16 compatible with all 2x16 and 4x16 High Density USB KVM Matrix Switch models
- Input impedance: 10k Ohms.
- Signal-to-Noise Ratio (SNR): 87 dBA
- Frequency Response: 20 Hz to 20 kHz, ± 0.5 dB.
- Total Harmonic Distortion + Noise: 0.02% at 1kHz.
- Requires powered speakers or headphones.
- Powered by the High Density USB KVM Matrix Switch.

Control Methods

Keyboard

- Scan, Broadcast, Sharing or Command modes are available from the keyboard using hot keys.

RS232 Control

- Female RJ45 connector.
- Baud rate 1200 to 115200.
- Address up to 15 units, all of which can be daisy-chained and controlled by one serial port.

Commands

- CS – causes one INx/OUTx connection to occur.
- CA – causes all inputs to connect to specified output.
- RO – reads what input is connected to specified output.
- RU – reads size of matrix, reports number of inputs and number of outputs on specified switch.
- SS – enables Autostatus feature, which sends messages via RS232 whenever a switch event occurs from any control source (OSD, front panel interface, etc.)

Ethernet Control

- Female RJ45 connector.
- 10/100 BaseT Ethernet interface.
- Supported protocol: Telnet.
- Control can be done over Telnet.

Telnet

- Commands are similar to RS232 commands.
- The telnet server listens on port 2005 (configurable).
 - Port 2005 is intended for a software control type session.

Front Panel Interface

- Locally change ports and navigate through LCD screen to execute actions.
- LCD indicates currently selected port for each user.

On Screen Display (OSD)

- Select computers by name with the On Screen Display (OSD)
- Use keyboard or mouse to operate the switch from menus superimposed onto the monitor.
- Power status of each computer is displayed.
- View usage statistics – power-on cycles and hours of usage.
- Names can be up to 12 characters long.
- Shows names of computers on cascaded switches up to 256 ports.
- Modify the size and position of the OSD.
- Help screens assist users with the OSD.
- OS- and software-independent.
- OSD is built into the switch – no need to install additional hardware or software.

Security

- Advanced security included.
- Each user password can be up to 15 characters long, and each switch can store up to 63 users.
- Administrator can enable or disable all security features and select which computers each user can access.
- Once security is enabled, a user or administrator must login in order to access any of the computers connected to the switch.

High Density VGA USB KVM Matrix Switch

UNIMUX™

Up to four users can control 32 USB computers

Ordering Specifications

This example explains the NTI part number by breaking it down into the available options. When ordering, choose the options that you require

UNIMUX - ^{Number of Users} n X ^{Number of CPUs} m - ^{Universal KVM Switch} U ^{High Density} HD ^{Optional USB Port} U ^{Optional Extender Port} $C5$ ^{Optional Audio Matrix Port} A

High Density VGA USB KVM Matrix Switch Models

NTI Part #	# of Users (n)	# of CPUs (m)	Rack Units	Rack Size WxDxH (in)	# of local user ports with extender port option	# of remote user ports with extender port option	Compatible with Audio Matrix Add-On Switch
UNIMUX-2X8-UHD	2	8	1RU	19x10x1.75	1	1	Yes
UNIMUX-2X16-UHD	2	16	1RU	19x10x1.75	1	1	Yes
UNIMUX-2X32-UHD	2	32	2RU	19x10x3.5	1	1	No
UNIMUX-4X8-UHD	4	8	1RU	19x10x1.75	2	2	Yes
UNIMUX-4X16-UHD	4	16	2RU	19x10x3.5	2	2	Yes
UNIMUX-4X32-UHD	4	32	2RU	19x10x3.5	2	2	No

Audio Matrix Add-On Switches

NTI Part #	# of Users (n)	# of CPUs (m)	Supported UNIMUX-nXm-UHDA/UHDUA/UHDC5A/UHDUC5A models
UNIMUX-SA-8X8	8	8	2X8, 4X8
UNIMUX-SA-16X16	2	16	2X16, 4X16

USB KVM Receiver (Remote Unit) For use with switch with extender port option

NTI Part #	Maximum Extension (ft.)	Dimensions WxDxH (in.)
ST-C5USBV-R-300	300	3.5x3.1x1.3

Cables

- Interface cables between your computers and the switch are required for proper operation. Use HDUSBVEXT-xx-MM to connect computers to the switch.
- Cables not included.