

SCREEN SPLITTER/VIDEO WALL PROCESSOR

Simultaneously display video signals from up to four different computers or video sources on a single screen

SPLITMUX®



SPLITMUX-SVDVI-2 (Front & Back)

Features & Applications

The SPLITMUX® Screen Splitter/Video Wall Processor allows you to simultaneously display and monitor video signals from up to four different computers or video sources on a single screen. Additionally, the SPLITMUX-SVDVI-x works as a video wall processor, video scaler, PiP generator, and video switch.

- Accepts digital and analog video inputs through a combination DVI/RGBHV/YPbPr connector and combination S-Video/Composite connector.
- Supports resolutions up to 1900x1200 and can de-interlace 1080i to 1080p.
- SPLITMUX-SVDVI-4: Dual, Tri, Quad, Picture in Picture and Full Screen display modes.
- SPLITMUX-SVDVI-2L and SPLITMUX-SVDVI-2: Dual, Picture in Picture and Full Screen display modes.
- Ability to rotate, stretch and crop multiple images.
 - Rotate available on SPLITMUX-SVDVI-2 and SPLITMUX-SVDVI-4 only.
- Ideal solution for many applications, including digital signage, trade shows, retail displays, video conferencing and security applications.
- Connect multiple units to create a video wall as large as 32x32 screens.
- Control the unit through IR remote control, front panel interface or RS232 commands.
- Stereo Audio available on SPLITMUX-SVDVI-4 only.

Specifications

Video Input

- Signal format: Composite, S-Video, YpbPr, RGBHV, RGsB, DVI
- Resolutions: 1080p, 1080i, 720p, 576i, 576p, 480i, 480p, VGA, SVGA, XGA, SXGA, UXGA, WVGA, WXGA, WUXGA (narrow band sync), user programmable resolutions.
- Connectors:
 - SPLITMUX-SVDVI-2L:
 - One female 4-pin miniDIN S-Video connector (Can be used as composite input with supplied RCA adapter.)
 - One female DVI-I connector (DVI and RGBHV/YPbPr). Analog input requires optional breakout cable.
 - If a DVI-I breakout cable is used, RGBHV/YPbPr can be connected as an additional input to the DVI. (3 possible inputs)
 - SPLITMUX-SVDVI-2:
 - One female 4-pin miniDIN S-Video connector (Can be used as composite input with supplied RCA adapter.)
 - One female DVI-I connector (DVI and RGBHV/YPbPr). Analog input requires optional breakout cable.
 - If a DVI-I breakout cable is used, RGBHV/YPbPr can be connected as an additional input to the DVI. (3 possible inputs)
 - SPLITMUX-SVDVI-4:
 - Two female 4-pin miniDIN S-Video connectors (Can be used as composite input with supplied RCA adapter.)
 - Two female DVI-I connectors (DVI and RGBHV/YPbPr). Analog input requires optional breakout cable.
 - If DVI-I breakout cables are used, RGBHV/YPbPr can be connected as two additional inputs to the DVI. (6 possible inputs)

Audio (SPLITMUX-SVDVI-4 Only)

- Connectors: Female 8-pin miniDIN connector for use with supplied audio breakout cable.
- Audio breakout cable includes 2 sets (R&L) of RCA inputs and one set (R&L) of RCA output.
- Audio signals are compensated for propagation delay for correct sync with video.
- Input/output: Unbalanced stereo line level and 48KHz digital.

Video Output

- Signal format: DVI, RGBHV, RGsB, and YpbPr.
- Resolutions: 1080p, 720p, 576p, 480p, VGA, SVGA, XGA, SXGA, UXGA, WVGA, WXGA, WUXGA (narrow band sync), user programmable resolutions.
- Connectors:
 - One female DVI-I connector (DVI and RGBHV/YPbPr). Analog output requires optional breakout cable.
 - If a DVI-I breakout cable is used, RGBHV/YPbPr can be connected as an additional output to the DVI.
- Bandwidth: 165MHz

Power

- 110 or 220 VAC at 50 or 60 Hz via AC adapter.

Dimensions

- WxDxH (in): 8.4x5.7x1



SCREEN SPLITTER/VIDEO WALL PROCESSOR

Simultaneously display video signals from up to four different computers or video sources on a single screen

Specifications (continued)

Package Includes

- SPLITMUX Screen Splitter.
- Power supply.
- IR remote control.
- SPLITMUX-SVDVI-2L, SPLITMUX-SVDVI-2:
 - One S-Video to Composite Video Adapter Cable - one male 4-pin miniDIN connector to three RCA jacks.
 - One RS232 adapter cable - one male 6-pin miniDIN connector to one male DB9 connector.
- SPLITMUX-SVDVI-4:
 - One S-Video to Composite Video Adapter Cable - one male 4-pin miniDIN connector to three RCA jacks.
 - One RS232 adapter cable - one male 6-pin miniDIN connector to one male DB9 connector.
 - One Audio Breakout cable - one male 4-pin miniDIN connector to eight RCA jacks.
- User manual.

Regulatory Approvals

- FCC

Warranty

- 2 years

Built-in Control

Front Panel Interface

- Use front panel buttons to locally change ports or to select a display mode.

RS232

- Configuration and control can be done through the serial port.
- Female 6-pin miniDIN (DB9 adapter included.)
- Baud rate: 2400 through 115200 bps

IR Remote Control

- Configuration and control can be done using the IR remote control.
- The remote is addressable for installing with multiple units.

On Screen Display (OSD)

- Select display modes and video sources with On Screen Display (OSD).
- Use the front panel buttons or IR remote control to operate the OSD.
- OSD controls for OSD position, dual mode, tri mode, quad mode, PIP mode, brightness, contrast, phase, Horz- and Vert-center alignment adjustment and image rotation.

Display Modes

Dual Mode

- In dual mode, the screen is split into two fields of equal size, each displaying the entire contents of two video sources.

Tri Mode

- In tri mode, the screen is split into three fields of equal size, each displaying the entire contents of three video sources.

Quad Mode

- In quad mode, the screen is split into four fields of equal size, each displaying the entire contents of four video sources. Quad mode cannot be rotated.

Full Screen Mode

- In full screen mode, one of the video sources is displayed in full screen size and maximum resolution.

Picture in Picture (PIP) Mode

- In PIP mode, the full screen display of one of the video sources is accompanied by a small image (thumbnail) of another video source allowing simultaneous monitoring.
- Translucent overlays maximize main image size while still seeing PiP

Video Wall Mode

- Connect multiple units to create a video wall.
- A SPLITMUX-SVDVI-x is required for each connected display within a video wall.
 - Use SPLITMUX-LOOP-KIT to loop multiple units together for a single point of control.
- Depending on input and output resolutions, video walls up to 32x32 can be created.
- SPLITMUX-SVDVI-2L can only create video walls with screens in horizontal position.

Screen Splitter / Video Wall Processor

NTI Part #	# of Ports	Display Modes
SPLITMUX-SVDVI-2L	2	Dual, Picture in Picture and Full Screen
SPLITMUX-SVDVI-2	2	Dual, Picture in Picture and Full Screen, Rotation
SPLITMUX-SVDVI-4	4	Dual, Tri, Quad, Picture in Picture, Full Screen, Rotation



330.562.1999
Worldwide fax



sales@ntigo.com



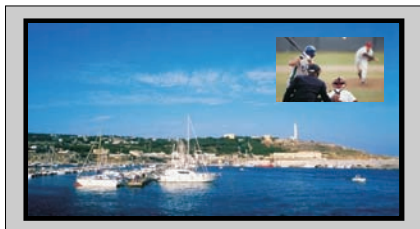
www.networktechinc.com

© 2007, 2009 NTI
All rights reserved

SCREEN SPLITTER/VIDEO WALL PROCESSOR

Simultaneously display video signals from up to four different computers or video sources on a single screen

Configuration Illustration



Single with PIP
SPLITMUX-SVDVI-2,
SPLITMUX-SVDVI-2L,
SPLITMUX-SVDVI-4



Dual Screen
SPLITMUX-SVDVI-2,
SPLITMUX-SVDVI-2L,
SPLITMUX-SVDVI-4



Single Rotated
SPLITMUX-SVDVI-2,
SPLITMUX-SVDVI-4



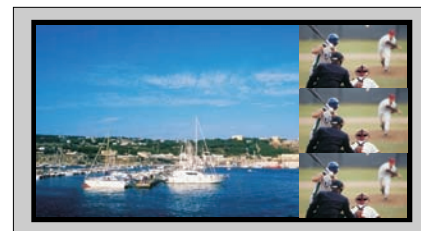
Dual Rotated
SPLITMUX-SVDVI-2,
SPLITMUX-SVDVI-4



Video Wall Mode Rotated Using 3 Units
SPLITMUX-SVDVI-2, SPLITMUX-SVDVI-4



Video Wall Mode Using 4 Units
SPLITMUX-SVDVI-2, SPLITMUX-SVDVI-2L, SPLITMUX-SVDVI-4



Quad Mode
SPLITMUX-SVDVI-4

